



October 2021

Student Voting Rates for Indiana University - Purdue University

2020 NSLVE Campus Report

October 2021

Dear Colleagues:

We are pleased to send this tailored report containing your students' voting rates for 2020. This report contains three years of relevant topline data: 2016, 2018, and 2020. As always, we disaggregate the data so you can better identify and address gaps in participation.

College and university students participated in record-breaking numbers in the 2020 election. In 2016, the Average Institutional Voting Rate was 53%. This year, it jumped to 66%. We encourage you to review Democracy Counts 2020, our most recent national report.

As in past years, we urge you to share this report widely and strategically, particularly with faculty who, in 2020, were often the most consistent communicators with students about ever-changing voting conditions and deadlines. We also urge you to review our recommendations for engaging elections to cultivate a robust and healthy campus climate for political engagement, discourse, equity, and participation: Election Imperatives (2019) and the more recent Election Imperatives: A Time of Physical Distancing and Social Action. Since "pervasive political discussions" and attentiveness to the campus culture around speech and academic freedom are among our top recommendations, we direct you to our discussion guides on talking about your NSLVE report, on free speech and inclusion, and on hot topics, our Making Sense of ... guides.

Finally, we always encourage you to work with us. Help us help you get better data by reaching out. Email IDHE@Tufts.edu for more information. And as always, watch your inbox for our periodic newsletter, IDHE Update, for announcements about upcoming releases and new resources.

Congratulations on engaging your students in the 2020 election. Remember, student political learning is a year-round objective. Elections may be episodic, but student political engagement should not be.

All the Best,
IDHE Team



(Top Row from left) Duy Trinh, Program Administrator; Adam Gismondi, Director of Impact; Dave Brinker, Senior Researcher; (Bottom Row from left) Nancy Thomas, Director; Norma López, Postdoctoral Scholar; Prabhat Gautam, Data Manager.

We also want to acknowledge and thank **Syed Golam Mohaimen, M.S. student in Data Science at Tufts University** for his contributions toward the creation of these reports.

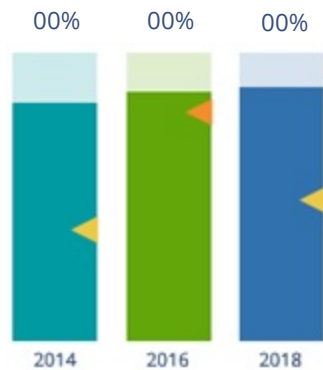
In This Report

This report presents data on student voter participation rates for your campus. The topline counts on page 5 tells you how many students voted, but we encourage you to look carefully at the data on subsequent pages to learn who voted. Data are presented in the form of vessel charts, overlapping donut charts, and tables.

	2014			2018			2014-2018 Change (p.p.)
	Enrolled	Voted	Rate (%)	Enrolled	Voted	Rate (%)	
Asian	-	-	-	-	-	-	-
American Indian/ Alaska Native	-	-	-	-	-	-	-
Black	-	-	-	-	-	-	-
Hispanic	-	-	-	-	-	-	-

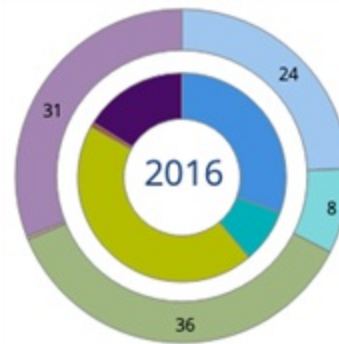
Tables

The tables show, on the left-side columns, the numbers of students and the rates from 2016, 2018, and 2020. On the left-side, percentage point (p.p.) changes between 2016 and 2020. A red down arrow indicates a decrease, a green up arrow indicates an increase, and a yellow arrow pointing to the right indicates no change. "-" in these tables indicates that the data is unavailable/missing, or is available for 10 or less students.



Vessel Chart

This chart shows rates out of 100%, with arrows to the right of each bar representing relevant national averages (medians), which you can find in IDHE's national report Democracy Counts 2020.



Overlapping Donut Chart

This chart is used to show the breakdown of vote method utilization (page 10), with the outer ring showing your campus method utilization and the inner ring showing the national breakdown. These are described in percentages.

Voting, Registration and Yield Rates

YOUR INSTITUTION

68.1%

2020 Voting Rate

+11.6

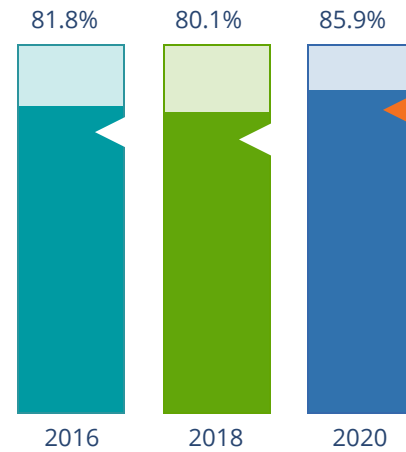
Change From 2016

ALL INSTITUTIONS

66%

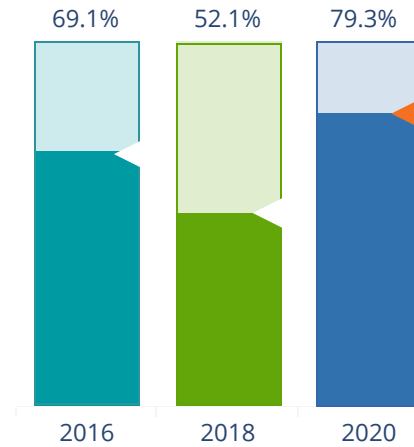
2020 Voting Rate

REGISTRATION RATE



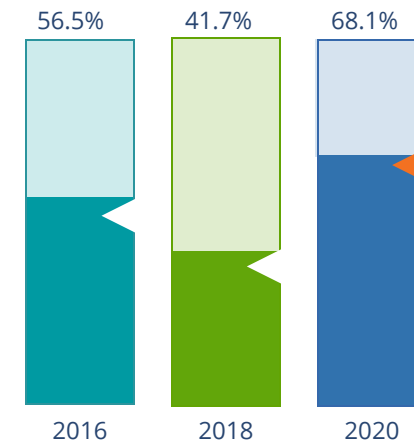
The **Registration Rate** is the percent of your voting-eligible students who registered to vote.

VOTING RATE OF REGISTERED STUDENTS



The **Voting Rate of Registered Students** is the percent of registered students who voted on Election Day. We often refer to this as the “yield” rate.

VOTING RATE



The **Voting Rate** is the percentage of eligible students who voted on Election Day. The voting rate is also the product of the registration and yield rates.

Looking Closer

Voting and Registration Rates

	2016	2018	2020	2016-2020 Change (p.p.)
Total Student Enrollment	29,152	29,012	28,696	↓ -456
(Age under 18/Unknown)	-	-	-	-
(NSC reported non-resident aliens)	1,981	1,866	1,483	↓ -498
(FERPA records blocked)	16	12	18	↑ 2
(Non-Degree Seeking Students)	935	1,128	1,044	↑ 109
Total eligible voters	26,219	26,006	26,151	↓ -68
Number of students who registered	21,445	20,823	22,452	↑ 1,007
Number of students who voted	14,826	10,843	17,803	↑ 2,977
Registration Rate %	82	80	86	↑ 4
Voting Rate of Registered Students %	69	52	79	↑ 10
Voting Rate %	57	42	68	↑ 12

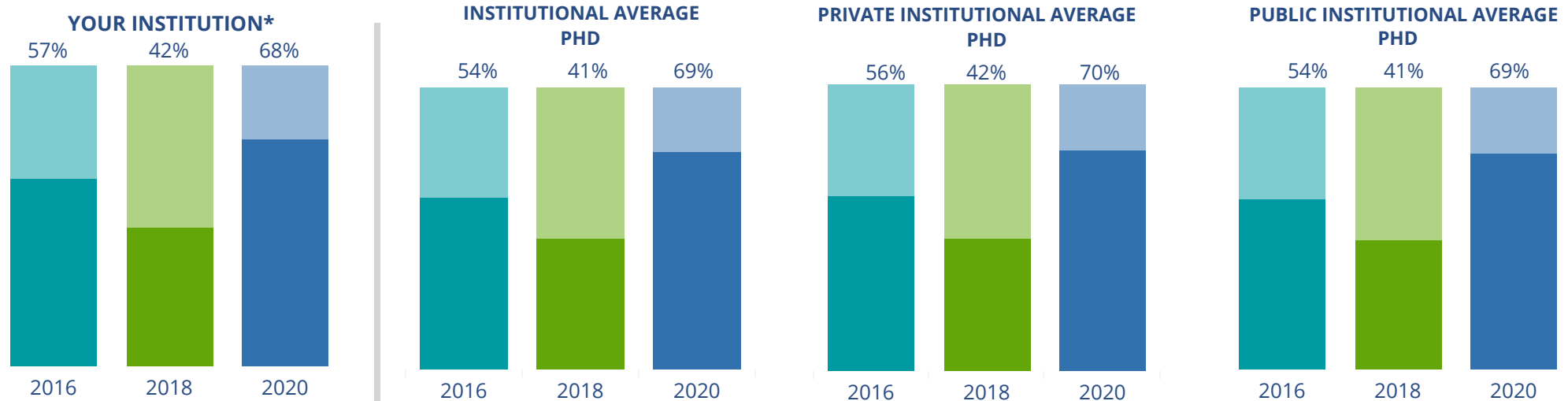
This page provides the numbers we used to calculate your voting, registration, and yield rates. The sub-categories under total student enrollment are the adjustments that we make to account for students who are ineligible to vote due to age or citizenship status. We also exclude, when correctly flagged, students who are not pursuing degrees.

We have removed non-resident aliens (international students) based on your institution's enrollment submission to the National Student Clearinghouse. This is indicated by "NSC reported non-resident aliens" on this page.

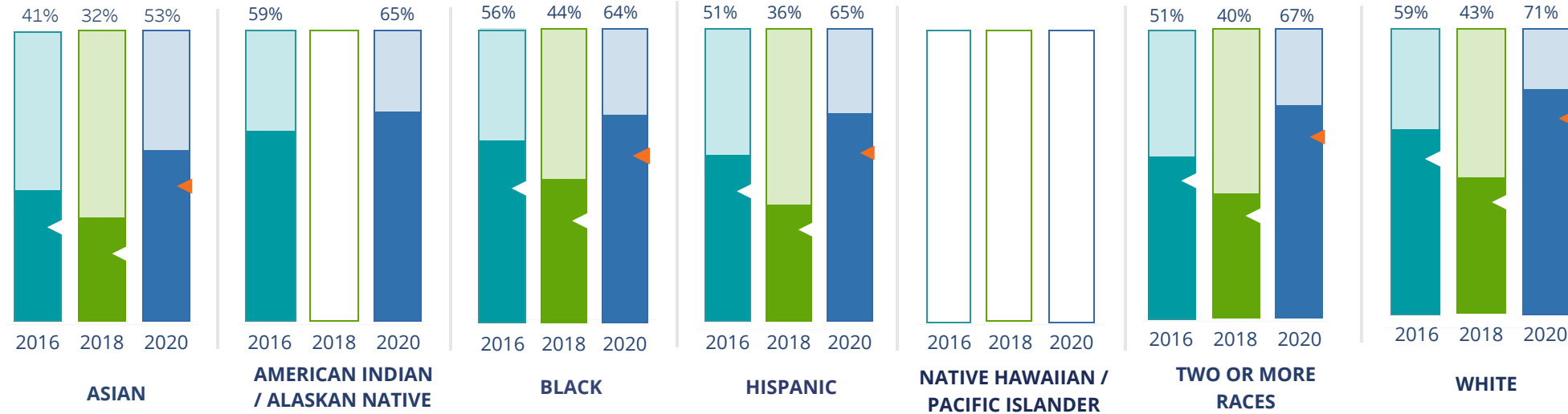
By Institution Types



These are estimated voting rates of your institution compared to the average voting rates of similar institutions in NSLVE. *"Your Institution" chart is presented at a different scale.



By Race / Ethnicity



These are estimated voting rates for race / ethnicity groups. These classifications are provided by campuses and are obtained following race reporting procedures* defined by the National Center for Education Statistics of the Institute of Education Sciences (IES). Please see our FAQ for more detail on why we cannot report national benchmark for some of the demographic groups:

<https://tufts.app.box.com/v/idhe-nslve-report-faq>

If you notice unavailable/missing data in this page, it could mean any of the following for your institution: (i) does not report this data; (ii) did not provide this data in past years; (iii) does not separately submit data for one or more of the demographic groups, or (iv) the data is reported for 10 or fewer students.

* <https://nces.ed.gov/ipeds/report-your-data/race-ethnicity-collecting-data-for-reporting-purposes>

Looking Closer

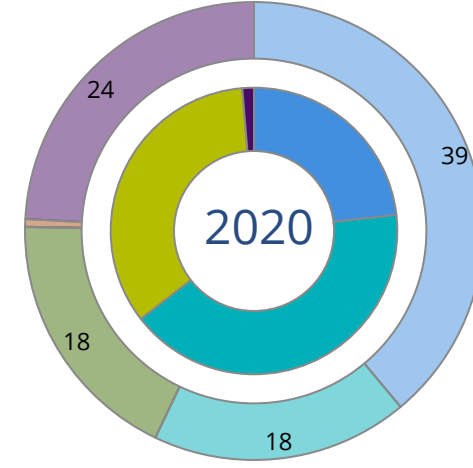
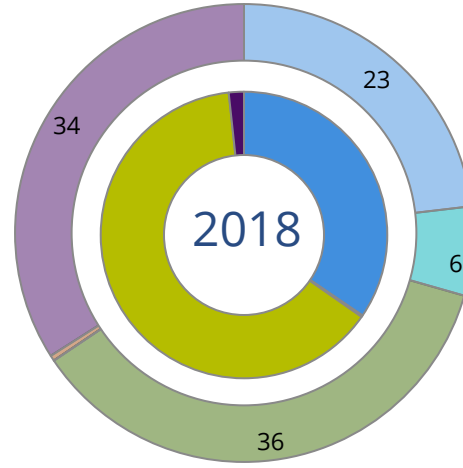
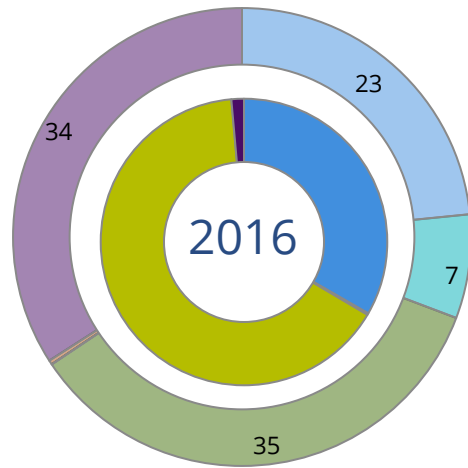
By Race/Ethnicity

This page provides the numbers we used to calculate race / ethnicity group voting rates. We include the counts of students and the change in rates between the two most recent comparable election years. If you notice unavailable/missing data in this page, it could mean any of the following for your institution: (i) does not report this data; (ii) did not provide this data in past years; (iii) does not separately submit data for one or more of the demographic groups, or (iv) the data is reported for 10 or fewer students.

	2016			2018			2020			2016-2020 Change (p.p)
	Enrolled	Voted	Rate	Enrolled	Voted	Rate	Enrolled	Voted	Rate	
Asian	1,299	528	41	1,514	490	32	1,691	896	53	↑ 12
American Indian/ Alaska Native	22	13	59	20	-	-	20	13	65	↑ 6
Black	2,600	1,465	56	2,426	1,070	44	2,517	1,610	64	↑ 8
Hispanic	1,744	896	51	2,047	742	36	2,549	1,645	65	↑ 13
Native Hawaiian/ Pacific Islander	20	-	-	-	-	-	-	-	-	-
2 or More Races	997	510	51	1,163	461	40	1,260	849	67	↑ 16
White	19,324	11,324	59	18,639	8,013	43	17,942	12,722	71	↑ 12
Race Unknown	213	82	38	187	54	29	165	65	39	↑ 1

By Voting Method

■ Not-In-Person
 ■ Early Vote
 ■ In-Person
 ■ Other
 ■ Provisional
 ■ Unknown



	2016		2018		2020		2016-2020	
	Voted	Rate	Voted	Rate	Voted	Rate	Change (p.p.)	
Early Vote	30	0	20	0	7,345	41	41	↑
In-Person on Election Day	9,657	65	6,898	64	6,081	34	-31	↓
Not-In-Person	4,937	33	3,746	35	4,139	23	-10	↓
Other	-	-	-	-	-	-	-	
Provisional	-	-	-	-	-	-	-	
Voting Method Unknown	200	1	179	2	235	1	0	↓

These are estimated rates for vote method utilization, the number of students utilizing each method, and the percent of students utilizing each method. Not all U.S. states provide information on vote method; voting method for voter files from these states are classified "Voting Method Unknown." For a list of these states, see our FAQ. <https://idhe.tufts.edu/nsive/nsive-faq#CampusReports>

By Age Group

	2016	2018	2020
18-21	50%	33%	65%
22-24	56%	41%	68%
25-29	62%	49%	70%
30-39	67%	57%	73%
40-49	72%	65%	82%
50+	78%	78%	86%

Voting is habit-forming and young voters will usually continue as voters in subsequent elections.

Also, young voters are more likely to be contacted by campaigns and are visible, and therefore significant, to elected officials. While in the past, we have seen voting rates increase across age groups, in recent cycles, the most significant increases have been among first-time and the youngest voters. Some colleges serve primarily young students, traditionally viewed as students in the 18-21 or 22-24 categories here. Others have much higher numbers of enrolled older undergraduate or graduate students.

Looking Closer

By Age Group

Here, we provide the numbers of students in each age category and the voting rates for each group. These are based on the student's age on the day of the election, as calculated by the National Student Clearinghouse using data from student enrollment records.

	2016			2018			2020			2016-2020
	Enrolled	Voted	Rate	Enrolled	Voted	Rate	Enrolled	Voted	Rate	Change (p.p)
18-21	11,322	5,684	50	12,046	4,025	33	12,170	7,892	65	↑ 15
22-24	6,433	3,576	56	6,271	2,592	41	6,183	4,193	68	↑ 12
25-29	4,365	2,716	62	4,034	1,982	49	4,003	2,801	70	↑ 8
30-39	2,580	1,733	67	2,345	1,334	57	2,441	1,792	73	↑ 6
40-49	1,051	752	72	884	577	65	940	767	82	↑ 10
50+	468	365	78	426	333	78	414	358	86	↑ 8

Looking Closer

By Sex

	2016			2018			2020			2016-2020	
	Enrolled	Voted	Rate	Enrolled	Voted	Rate	Enrolled	Voted	Rate	Change (p.p)	
Female	14,945	8,692	58	15,214	6,434	42	15,805	11,067	70	↑	12
Male	11,271	6,132	54	10,792	4,409	41	10,346	6,736	65	↑	11

These are estimated voting rates for sex groups and the numbers we used to calculate their voting rates. These classifications are provided by campuses and are obtained following the reporting procedures defined by the National Center for Education Statistics (NCES) of the Institute of Education Sciences (IES). Presently, NCES requires institutions to report students as “Male” or “Female” only.*

If you notice missing data in this page, it could mean any of the following for your institution: (i) does not report this data; (ii) did not provide this data in past years; (iii) does not separately submit data for one or more of the demographic groups, or (iv) the data is reported for 10 or fewer students.

*<https://surveys.nces.ed.gov/ipeds/public/survey-materials/faq?faqid=11>

Looking Closer

By Education Level / Undergraduate Class Year

	2016			2018			2020			2016-2020	
	Enrolled	Voted	Rate (%)	Enrolled	Voted	Rate (%)	Enrolled	Voted	Rate (%)	Change (p.p)	
EDUCATION LEVEL											
Undergraduate	19,621	10,428	53	19,322	7,057	37	19,168	12,466	65	↑	12
Graduate	6,251	4,194	67	6,433	3,646	57	6,766	5,170	76	↑	9
Class Unknown	347	204	59	251	140	56	217	167	77	↑	18
CLASS YEAR											
First Year	4,724	46	2,166	4,531	28	1,263	4,392	61	2,663	↑	15
Second Year	4,328	51	2,223	4,248	35	1,473	4,145	64	2,650	↑	13
Upper Level	10,570	57	6,035	10,483	41	4,290	10,609	67	7,136	↑	10
ENROLLMENT STATUS											
Full-time	21,266	11,690	55	21,119	8,280	39	21,313	14,283	67	↑	12
Part-time	4,950	3,134	63	4,887	2,563	52	4,838	3,520	73	↑	9

These are estimated voting rates by Education Level (undergraduate/graduate), Class Year, and Enrollment Status (full-time/part-time), and the numbers we used to calculate these rates.

If you notice missing data in this page, it could mean any of the following for your institution: (i) does not report this data; (ii) did not provide this data in past years; (iii) does not separately submit data for one or more of the demographic groups, or (iv) the data is reported for 10 or fewer students.

By Field of Study

FIELDS	2016			2018			2020			2016-2020
	Enrolled	Voted	Rate	Enrolled	Voted	Rate	Enrolled	Voted	Rate	Change (p.p)
Area, Ethnic, Cultural, and Gender Studies	-	-	-	15	11	73	30	29	97	-
Biological and Biomedical Sciences	1,395	723	52	1,345	509	38	1,494	993	66	↑ 15
Business, Management, and Marketing	3,496	1,867	53	3,386	1,252	37	3,126	2,041	65	↑ 12
Communication and Journalism	868	538	62	853	393	46	815	593	73	↑ 11
Computer and Information Sciences	1,116	605	54	1,156	503	44	1,174	725	62	↑ 8
Education	1,360	836	61	1,278	584	46	1,139	827	73	↑ 11
Engineering and Engineering Technologies	2,425	1,189	49	2,323	763	33	2,154	1,297	60	↑ 11

These are estimated voting rates by field of study, and the numbers we used to calculate the field of study rates. For an explanation of CIP codes, please see our FAQ.* There are roughly 8,000 fields of study among U.S. colleges and universities, so we provide rates for condensed categories.

*<https://tufts.app.box.com/v/idhe-nslve-report-faq>

By Field of Study

FIELDS	2016			2018			2020			2016-2020	
	Enrolled	Voted	Rate	Enrolled	Voted	Rate	Enrolled	Voted	Rate	Change (p.p)	
English Language and Literature	222	159	72	197	120	61	187	148	79	↑	8
Foreign Languages, Literatures, and Lingui..	173	109	63	122	57	47	125	87	70	↑	7
Health Professions	6,244	3,476	56	6,977	2,686	38	7,540	5,028	67	↑	11
History	135	92	68	122	75	61	133	107	80	↑	12
Law Enforcement, Firefighting, and Protec..	791	412	52	731	262	36	749	489	65	↑	13
Legal Professions and Studies	848	620	73	762	486	64	795	637	80	↑	7
Liberal Arts and Sciences, and Humanities	1,143	623	55	981	428	44	1,005	665	66	↑	12
Mathematics and Statistics	214	112	52	151	76	50	144	93	65	↑	12
Multi/Interdisciplinary Studies	281	177	63	267	150	56	258	199	77	↑	14
Natural Resources and Conservation	75	44	59	97	52	54	112	79	71	↑	12
Parks, Recreation, Leisure, and Fitness Stu..	645	290	45	571	164	29	482	296	61	↑	16
Philosophy and Religious Studies	53	34	64	49	26	53	37	25	68	↑	3
Physical Sciences	412	220	53	425	156	37	354	224	63	↑	10

By Field of Study

FIELDS	2016			2018			2020			2016-2020 Change (p.p)
	Enrolled	Voted	Rate	Enrolled	Voted	Rate	Enrolled	Voted	Rate	
Psychology	1,006	512	51	870	319	37	995	648	65	↑ 14
Public Administration and Social Service Professions	1,365	941	69	1,496	816	55	1,525	1,215	80	↑ 11
Social Sciences	588	390	66	478	265	55	436	321	74	↑ 7
Visual and Performing Arts	819	503	61	817	351	43	795	592	74	↑ 13
Unknown	320	182	57	290	157	54	250	189	76	↑ 19

About This Report

Thank you for participating in the National Study of Learning, Voting, and Engagement.

Since NSLVE's launch in 2013, nearly 1,200 colleges and universities have signed up to receive their voting rates for the 2012, 2014, 2016, 2018, and 2020 federal elections.

Along with others, your institution's participation in this study has allowed us to build a robust database of over 50 million college student records, about 10 million for each election year, that serve as a foundation for innovative research on college student political learning and engagement in democracy.

NSLVE is a signature initiative of the Institute for Democracy and Higher Education (IDHE) at Tufts University's Jonathan M. Tisch College of Civic Life. The mission of IDHE is to shift college and university priorities and culture to advance political learning, agency, and equity. We achieve our mission through research, resource development, technical assistance, and advocacy.

About the Data

The voter registration and voting rates in this report reflect the percentage of your institution's students who were eligible to vote and who actually voted in the 2016, 2018, and 2020 elections.

These results are based on enrollment records your institution submitted to the National Student Clearinghouse (NSC) and publicly available voting files collected by L2 Political.

Enrollment lists are adjusted by deducting students under age 18 (at the time of the election), people identified as non-degree seeking and those identified by campuses as "nonresident aliens" (NRAs) (the federal government's category for mostly international students). Unfortunately, not all campuses report NRAs to NSC. For those campuses, we use IPEDS to calculate the number of NRA students on each campus and adjust NSC enrollment numbers to estimate the number of students to remove. We also quality check NRA removals by verifying that there is little to no discrepancy between the number of international students reported by the campus to IPEDS and to NSC. We cannot adjust subgroup analyses absent identification of NRAs verified by the process above. We welcome closer partnerships with individual colleges and universities to provide more accurate rates. For more on the data and the matching process, see our FAQ on Campus Reports.

Indiana University - Purdue University

Thank you for the work you do to improve your students' political learning and engagement. We hope that you find your NSLVE report useful. For up-to-date news on NSLVE data, resources, and to sign up for our newsletter visit: <https://idhe.tufts.edu>.

References: IDHE encourages report recipients to share this report as broadly as possible, including posting it on the college or university's website. When doing so, please use the following citation: Institute for Democracy & Higher Education: National Study of Learning, Voting and Engagement. (2021). 2016, 2018, and 2020 report for _____ [name of institution]. Medford, MA.



Barnum Hall
163 Packard Ave.
Medford, MA 02155

tischcollege@tufts.edu
617.627.3453



Institute for Democracy & Higher Education:
National Study of Learning, Voting, and Engagement
Barnum Hall, Medford, MA 02155

Follow Us on Twitter: @TuftsIDHE
NSLVE@tufts.edu
617.627.0620